

Analysis and design of composite steel and concrete structures for buildings according to Eurocode 4

Steel Design 4

Composite structures

J.W.B. Stark

R.J. Stark

Colofon

text prof.ir. J.W.B. Stark and ing. R.J. Stark
editing ir. C.H. van Eldik / Bouwen met Staal
graphic design Karel Ley / Fig.84-Reclamestudio

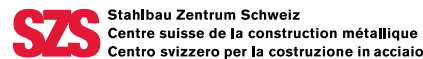
published by Bouwen met Staal
ISBN 978-90-75146-06-6

The publication of this textbook has been made possible by:

Bauforumstahl	www.bauforumstahl.de
Bouwen met Staal	www.bouwenmetstaal.nl
Infosteel	www.infosteel.be
Stahlbau Zentrum Schweiz	www.szs.ch
Tata Steel	www.tatasteelconstruction.com
World Steel Association	www.constructsteel.org



TATA STEEL



worldsteel
ASSOCIATION

© **Bouwen met Staal 2022**

All rights reserved. No part of this publication may be reproduced, stored in an automated database and/or made public – in any form or by any means, electronic, mechanical, photocopying, recording or in any other way – without prior written permission from the publisher. The utmost care was taken in the preparation of this publication. Nevertheless, any errors and imperfections can not be ruled out. The publisher excludes – also for the benefit of all those who have participated in this publication – any liability for direct and indirect damage, caused by or in connection with the application of this publication.

This textbook was originally published in 2009 by Bouwen met Staal in Dutch as *Staal-beton* by the same authors. The English translation has been prepared by prof.dr. M. Veljkovic and dr.ir. R. Abspoel (both Delft University of Technology) and checked by dr. G. Couchman (The Steel Construction Institute). The text is based on the (English) EN version of the Eurocodes using default and/or recommended values. Where a country can make a national choice – or when non-contradictory complementary information may be used – this is indicated by the following symbol: **NA**. Separate annexes contain the national choices for Belgium, Luxembourg, The Netherlands and Switzerland. These annexes – as well as any errata, corrections and additions to this textbook – can be downloaded free of charge from the websites of the (national) organisations.

Illustrations

All unnamed photographs and all drawings come from the archive of Bouwen met Staal.

B = bottom, L = left, M = middle, R = right, T = top.

ABT 1.2R, 4.1B	Fas Keuzenkamp 1.38, p. 6-1
Art & Build 1.5R	Tom de Rooij Vakfotografie 1.2L, 1.2M
Architectenbureau Cepezed 1.41	Tata Steel 1.19
Advies- en ingenieursbureau DHV 1.39	R. Schropp 1.36
H.H. van Doorn 1.40	Ingenieursbureau SmitWesterman 1.5L, 1.37, p. 2-1, 6.2
Duofor 1.26	Studwelders/Composite Metal Flooring cover, p. 1-1, 1.20
Dutch Engineering 1.1, 1.11, 1.24, 1.25, 1.43, 1.44, 1.45, p. 3-1, 3.1	Vercruysse & Dujardin 1.28, 4.1T
C.H. van Eldik 1.9R, 1.34	
Infosteel p. 4-1	

Content

1	Composite structures	1-2
1.1	Composite beams	1-3
1.1.1	Structural system	1-3
1.1.2	Design	1-6
1.1.3	Connections	1-8
1.1.4	Fire resistance	1-8
1.2	Composite slabs	1-10
1.2.1	Structural system	1-11
1.2.2	Design	1-12
1.2.3	Fire resistance	1-13
1.2.4	Execution	1-14
1.3	Composite columns	1-15
1.3.1	Structural system	1-15
1.3.2	Design	1-16
1.3.3	Fire resistance	1-16
1.3.4	Execution	1-17
1.4	Applications	1-18
1.4.1	Weight reduction	1-18
1.4.2	Freedom of design	1-18
1.4.3	Cost savings	1-19
1.4.4	Project examples	1-19
1.5	EN 1994 (Eurocode 4)	1-24
1.5.1	Structure and lay-out	1-24
1.5.2	National Annexes	1-25
1.6	Literature	1-28
2	Composite beams	2-2
2.1	Principles of design	2-2
2.1.1	Partial factors	2-2
2.1.2	Material properties	2-3
2.1.3	Properties of shear connectors	2-4
2.1.4	Classification of cross-sections	2-6
2.1.5	Effective width	2-8
2.2	Properties of composite cross-sections	2-9
2.2.1	Plastic moment resistance in sagging bending: longitudinal shear not critical	2-10





2.2.2	Plastic moment resistance in hogging bending: longitudinal shear not critical	2-15
2.2.3	Elastic moment resistance and flexural stiffness in sagging bending: complete interaction	2-18
2.2.3	Elastic moment resistance and flexural stiffness in hogging bending: complete interaction	2-19
2.2.5	Resistance to vertical shear	2-19
2.2.6	Combined bending and vertical shear	2-20
2.2.7	Partially-encased beams	2-21
2.3	Resistance of simply supported composite beams	2-22
2.3.1	Criteria for the assessment	2-22
2.3.2	Assessment of the moment resistance	2-23
2.3.3	Assessment of the shear connection for full shear connection	2-23
2.3.4	Assessment of the shear connection for partial shear connection	2-26
2.4	Resistance of continuous composite beams	2-32
2.4.1	Criteria for the assessment	2-32
2.4.2	Rigid plastic global analysis	2-33
2.4.3	Linear elastic analysis with limited redistribution	2-35
2.4.4	Assessment of a full shear connection	2-37
2.4.5	Assessment of a partial shear connection	2-40
2.4.6	Lateral-torsional stability of unrestrained steel flanges in compression	2-40
2.5	Deflection of simply supported composite beams	2-41
2.5.1	Creep and shrinkage of concrete	2-41
2.5.2	Deformation of shear connections	2-42
2.6	Deflection of continuous composite beams	2-46
2.7	Cracking of concrete	2-47
2.7.1	Nominal reinforcement (without crack width control)	2-48
2.7.2	Minimum reinforcement	2-48
2.7.3	Reinforcement to limit crack width imposed by direct loading	2-49
2.8	Design for the fire limit state	2-52
2.8.1	Material properties	2-52

2.8.2	Simple calculation method for composite beams without concrete encasement	2-54
2.8.3	Simplified calculation method for partially encased steel beams	2-59
2.8.4	Assessment using design tables	2-64
2.9	Literature	2-66



3	Composite slabs	3-2
3.1	Field of application and design phases	3-2
3.2	Interaction between steel sheeting and concrete	3-4
3.3	Cross-section properties	3-8
3.3.1	Moment resistance in sagging bending	3-8
3.3.2	Moment resistance in hogging bending	3-11
3.3.3	Flexural stiffness in sagging bending	3-11
3.3.4	Flexural stiffness in hogging bending	3-12
3.3.5	Vertical shear and punching shear resistance	3-12
3.4	Ultimate limit state	3-14
3.4.1	Execution phase	3-15
3.4.2	Final phase	3-15
3.4.3	Assessment of longitudinal shear resistance using the m and k method	3-16
3.4.4	Assessment of longitudinal shear resistance using the τ_u method	3-18
3.4.5	Extra possibilities using the τ_u method	3-21
3.5	Serviceability limit state	3-22
3.6	Fire limit state	3-24
3.6.1	Unprotected composite slabs	3-24
3.6.2	Protected composite slabs	3-36
3.7	Literature	3-36

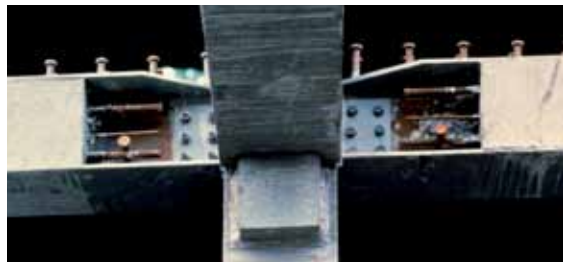


4	Composite columns	4-2
4.1	Principles of design	4-2
4.2	Properties of the cross-section	4-3
4.2.1	Resistance to centric compression	4-3
4.2.2	Resistance to combined compression and bending	4-5
4.3	Assessment of column stability	4-8
4.3.1	Axial compression	4-8
4.3.2	Compression and uniaxial bending	4-12
4.3.3	Compression and biaxial bending	4-14

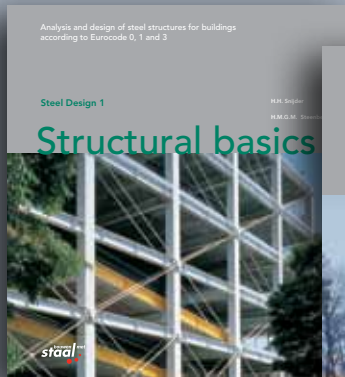
4.4	Load introduction	4-18
4.5	Fire limit state	4-21
4.5.1	Simple calculation models	4-21
4.5.2	Fully encased steel sections	4-22
4.5.3	Partially encased steel sections	4-24
4.5.4	Hollow sections filled with unreinforced concrete	4-28
4.5.5	Hollow sections filled with reinforced concrete	4-29
4.6	Literature	4-32

5	Composite joints	5-2
5.1	Types of joints and design principles	5-2
5.1.1	Types of composite frames	5-2
5.1.2	Selection of the joint type and design rules	5-8
5.2	Frame design	5-10
5.2.1	M/ϕ diagram	5-10
5.2.2	Modelling and classification	5-12
5.3	Determining joint properties	5-14
5.3.1	Component method	5-14
5.3.2	Calculation methodology	5-16
5.4	Design example joint with contact plate	5-20
5.4.1	Input	5-20
5.4.2	Moment resistance	5-20
5.4.3	Initial stiffness	5-25
5.5	Literature	5-28

6	Worked example cinema auditorium	6-2
6.1	Floor structure and design data	6-2
6.2	Main beam	6-5
6.2.1	Assessment at normal temperature	6-6
6.2.2	Assessment of the fire limit state	6-14
6.3	Transverse beam	6-18
6.3.1	Assessment at normal temperature	6-18
6.3.2	Assessment of the fire limit state	6-25
6.4	Column	6-25
6.3.1	Assessment at normal temperature	6-25
6.3.2	Assessment of the fire limit state	6-27



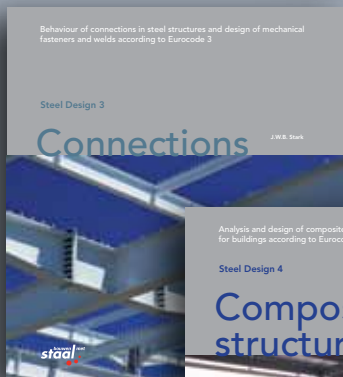
Steel Design series



Steel Design 1



Steel Design 2



Steel Design 3



Steel Design 4



Steel Design 5

Education and high quality textbooks are crucial to developing an interest in steel structures and their benefits for clients, architects and designers. However, despite the need to inspire the industry's next generation, many textbooks on steel structures are commissioned on a low budget, resulting in material that lacks imagination and tends to feature, at best, moderate illustrations. These textbooks are usually intended for high school and university level students, as well as designers who are not yet specialised in steel and steel construction. Therefore, it is vital that lecturers have access to up-to-date books that offer clear and concise explanations, while inspiring readers about the possibilities of steel through beautiful graphics and images. Steel Design is a set of English textbooks translated from the original Dutch that are based on the EN version of Eurocode with differences in nationally defined parameters included in an annex. These textbooks are intended for high-school and university level students. The content is applicable to designers who are not specialised in steel and steel construction. See <https://publicaties.bouwenmetstaal.nl/?p=all> for more detailed information on *Structural basics*, *Fire*, *Connections* and other textbooks of Bouwen met Staal.

Steel Design series

The textbooks in the Steel Design series are based on the (English) EN version of the Eurocodes using default and/or recommended values. Where a country can make a national choice – or when non-contradictory complementary information may be used – this is indicated by a symbol (black square). Separate annexes contain (for now) the national choices for Belgium, Luxembourg, The Netherlands and Switzerland. These annexes can be downloaded free of charge, when available, from the websites of the (national) organisations as well as any errata, corrections and additions to these textbooks.

The Steel Design series has been made possible by:

